

# CERTIFICATE OF LOCATION OF GOVERNMENT CORNER

NORTH QUARTER Corner of Section 17, Township 107N, Range 39W

5th Principal Meridian, State of Minnesota, County of MURRAY

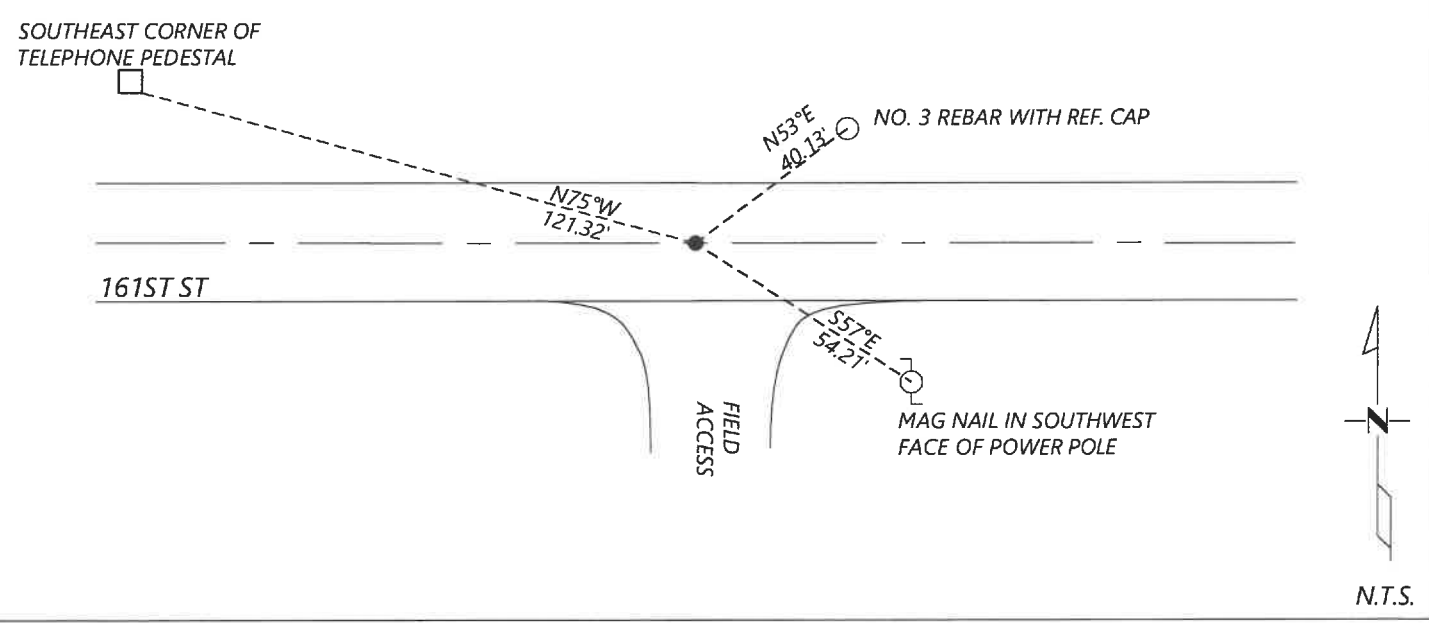
At the corner location shown on the sketch:

On 11/03/2020 found a STONE 14X8X6" WITH "1/4" SCRIBED ON IT

left monument as found  lowered monument  removed monument (explain)

On 12/16/2020 placed a NO. 4 REBAR WITH CAP LS 45874, DOWN 0.5FT

### SKETCH OF REFERENCE TIES



Statement of evidence for this corner location is on back of this page.

I hereby certify that this document was researched and prepared by me or under my direct supervision and that I am a licensed Land Surveyor under the laws of the State of Minnesota.

Signature [Handwritten Signature]

Date 6/16/2021 License No. 45874

Title:

- Land Surveyor
- Professional Engineer
- County Surveyor
- County Engineer

OFFICE OF THE COUNTY RECORDER

County of Murray

I hereby certify that this document was filed in the Co.

Recorder's office at \_\_\_\_\_ M. on the \_\_\_\_\_ day of \_\_\_\_\_ A.D. 20

County Recorder Karen Brown by JUN 22 2021, Deputy

DOCUMENT NO. \_\_\_\_\_

Statement of Evidence:

North Quarter Corner of Section 17, Township 107 North, Range 39 West, 5th Principal Meridian, Murray County, Minnesota.

1861 July, GLO Notes: Set post in mound.

1901 May, Survey record for Section 17 shows a stone and pits at the corner.

2020 December, Westwood Professional Services excavated with a backhoe and found a 14x8x6" stone very close to the road surface laying on its side. Possibly the 1901 stone, but has been obviously disturbed and I considered the corner lost. I buried the stone at a depth of 2.5ft and set a  $\frac{1}{2}$ " rebar with cap LS 45874 at the single prorated distance. The stone is about 3.5ft north and 4.2ft west of my iron.

Analysis of the recovered data, field evidence and survey measurements, indicates that the monument found is the correct perpetuation of this corner. For additional information concerning this corner please contact Westwood Professional Services.